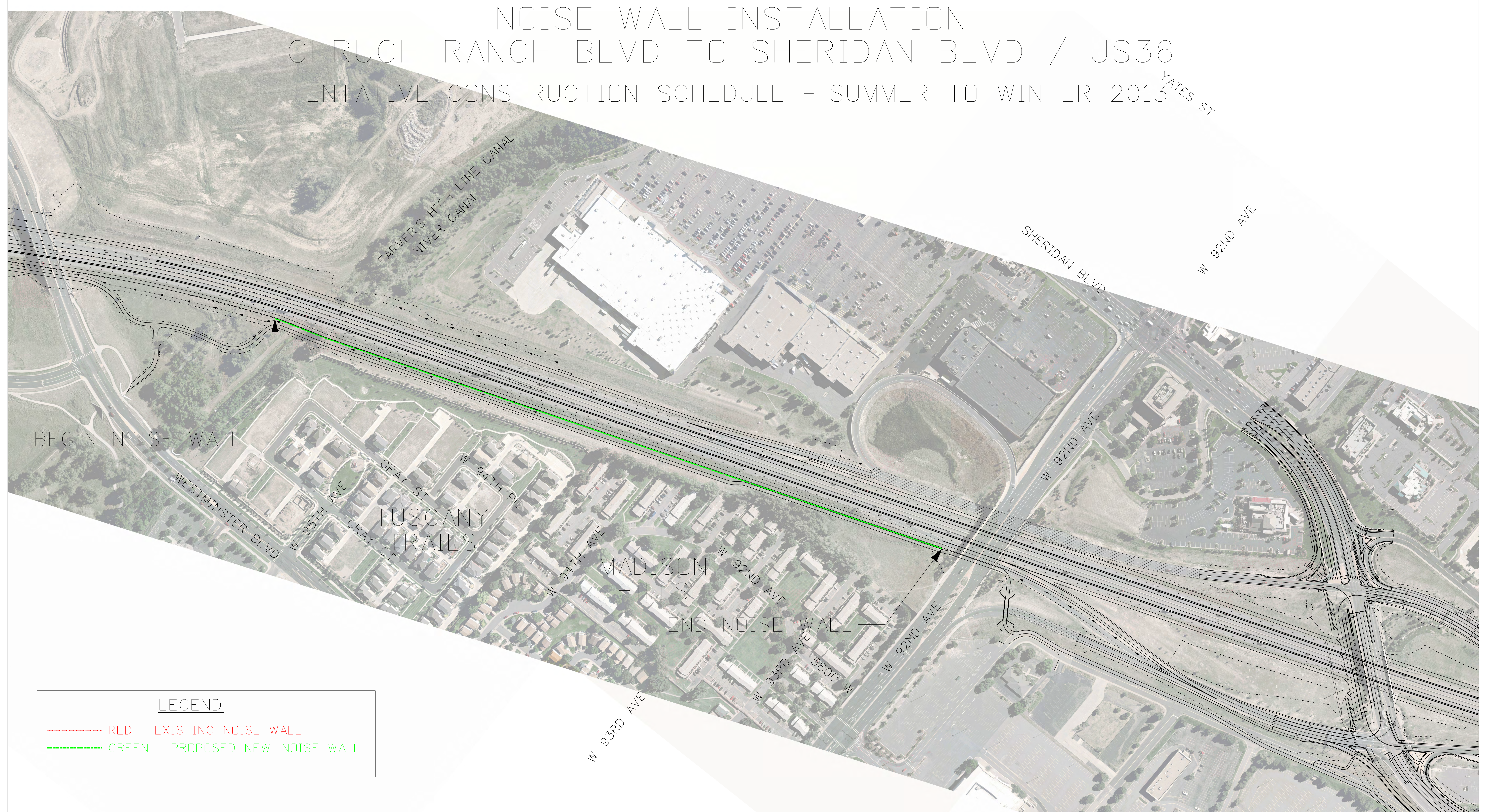


NOISE WALL INSTALLATION
CHRUCH RANCH BLVD TO SHERIDAN BLVD / US36
TENTATIVE CONSTRUCTION SCHEDULE - SUMMER TO WINTER 2013



LEGEND

- RED - EXISTING NOISE WALL
- GREEN - PROPOSED NEW NOISE WALL